



# Magic Mouse 2

## Apple Recycler Guide

June 2023

# Contents

3	<a href="#">About This Guide</a>
4	<a href="#">Identification</a>
5	<a href="#">Directive 2012/19/EU Annex VII Components</a>
6	<a href="#">Safety Considerations</a>
8	<a href="#">Recommended Tools</a>
9	<a href="#">Disassembly Instructions</a>
15	<a href="#">Material Categorization of Output Fractions</a>

# About This Guide

Apple Recycler Guides provide guidance for electronics recyclers on how to disassemble products to maximize recovery of resources. The guides provide step-by-step disassembly instructions and information on the material composition to help recyclers direct fractions to the appropriate material recycler.

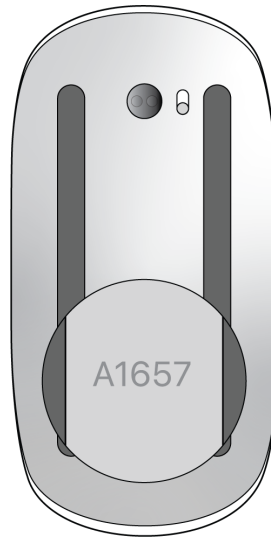
To conserve important resources, we work to reduce the materials we use and aim to one day source only recycled or renewable materials in our products. A key path to reaching that goal is resource recovery from end-of-life electronics.

Disassembly procedures are intended to be performed only by trained electronics recycling professionals. The recycler is responsible for independently evaluating and ensuring compliance with all applicable environmental, health, and safety laws related to the work. These include but are not limited to laws relating to the management, handling, shipping, and disposal of the outputs of this work as waste and laws in place to ensure the health and safety of all employees who support this work.

For questions or feedback about this guide, email [contactesci@apple.com](mailto:contactesci@apple.com).

# Identification

You can find the model number on the bottom of the Magic Mouse 2.



*Model number:*  
A1657

# Directive 2012/19/EU Annex VII Components

Directive 2012/19/EU Annex VII requirements apply to the following substances and components.

<b>Substance/Component</b>	<b>Apple Part Name</b>	<b>Removal Instructions</b>
Printed circuit board if the surface is greater than 10 square centimeters	Main logic board	Follow steps 1–4
External electric cables	Charge cable	Follow step 1
Battery	Lithium-ion polymer battery	Follow steps 1–3
No further substances or components as listed in Annex VII		

# Safety Considerations

The recycler is responsible for independently evaluating all activities undertaken by its employees to perform or support the work and ensuring compliance with all applicable health and safety laws related to the work. These include but are not limited to laws relating to the health and safety of all employees who perform or support this work. The recycler is also responsible for evaluating the workspace and ensuring that the area in which the work is to be undertaken is designed using ergonomic best practices and meets all ergonomic requirements to ensure the protection of its employees.

## Personal Protective Equipment

Personal protective equipment should be worn during the entire recycling process.



Wear hand protection



Wear protective clothing



Wear eye protection



Wear foot protection

## Battery Safety

This product uses a lithium-ion polymer battery. Before beginning any disassembly work, ensure that a safe working procedure for handling lithium-ion batteries has been established, which could include discharging the batteries so that they can be more safely managed. The following considerations may also be included:

- Remove anything from your person that could conduct energy, such as jewelry and watches, to avoid electric shock to yourself or the logic board.
- To avoid the potential for thermal runaway and the release of potentially noxious fumes, don't puncture, strike, or crush lithium-ion polymer batteries or devices powered by them.
- Don't throw, drop, or bend the battery.
- Don't expose the battery to excessive heat or sunlight.
- Don't use tools that are sharp or conduct electricity.
- Keep your workspace clear of foreign objects and sharp materials.
- Dispose of batteries according to local environmental laws and guidelines.

## Workspace safety guidelines

- Use heat-resistant gloves and safety glasses.
- Keep a sand dispenser within arm's reach (2 feet or 0.6 m) on one side of the workstation, not above the workstation. The dispenser should be a wide-mouthed, quick-pour metal container with a flip-top lid or tray that contains 8–10 cups (1.9–2.4 L) of clean, dry, untreated sand.
- Keep the battery at least 2 feet (0.6 m) from paper and other combustible materials.
- Work in an area with adequate ventilation.

## Handling a thermal runaway

If you notice any of the following signs, a thermal runaway is likely underway, and you should act immediately:

- The lithium-ion polymer battery or a device containing one begins to smoke or emit sparks or soot.
- The battery pouch suddenly and quickly puffs out.
- You hear hissing or popping sounds.

**Don't** use water or an ABC/CO<sub>2</sub> fire extinguisher on a thermal runaway battery or a device containing one. Water and ABC/CO<sub>2</sub> fire extinguishers will not stop the reaction.

**Do** smother the battery or device immediately with plenty of clean, dry sand, dumped all at once. Timing is critical; the faster you pour all the sand, the faster the thermal runaway will stop.

**Do** leave the room for 30 minutes if the thermal runaway causes any irritation.

**Do** wait 30 minutes before touching the battery. Wear heat-resistant gloves and safety glasses to remove the battery from the sand, or use a touchless thermometer to measure the battery temperature. Only touch the battery when the event has finished.

**Do** dispose of the damaged battery or device (including any debris removed from the sand) according to local environmental laws and guidelines.

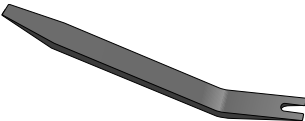
## Hazard Warning



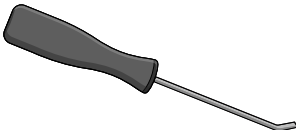
Rechargeable battery hazard

# Recommended Tools

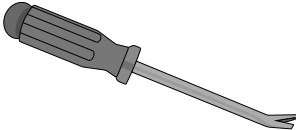
Miniature plastic pry bar



Miniature pry bar



Nail-pulling screwdriver

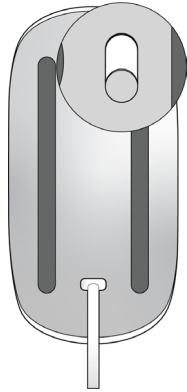




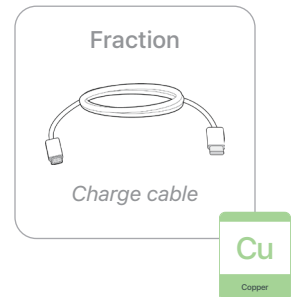
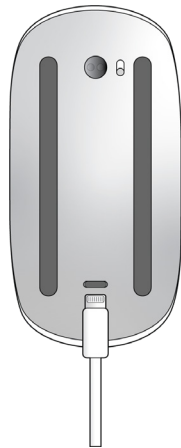
# Disassembly Instructions

## 1. Remove the charge cable.

» *Turn off the Magic Mouse 2*



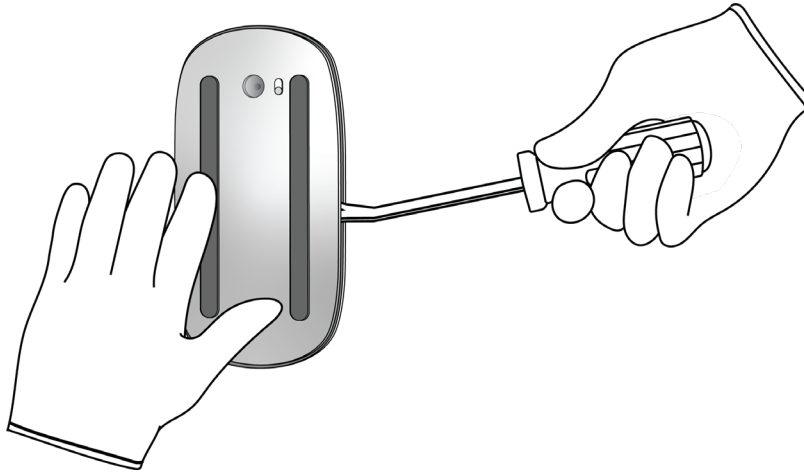
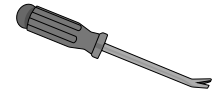
» *Unplug the charge cable.*



## 2. Separate the upper case from the foot assembly.

- » Place the Magic Mouse 2 facedown.
- » Pry the foot assembly away from the upper case. Set the upper case aside.

### Tools Used

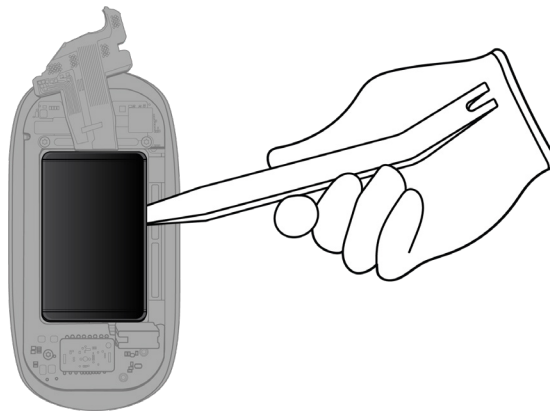
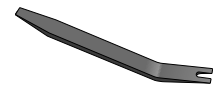


## 3. From the foot assembly, carefully remove the lithium-ion polymer battery.



Rechargeable battery hazard

### Tools Used



### Fraction

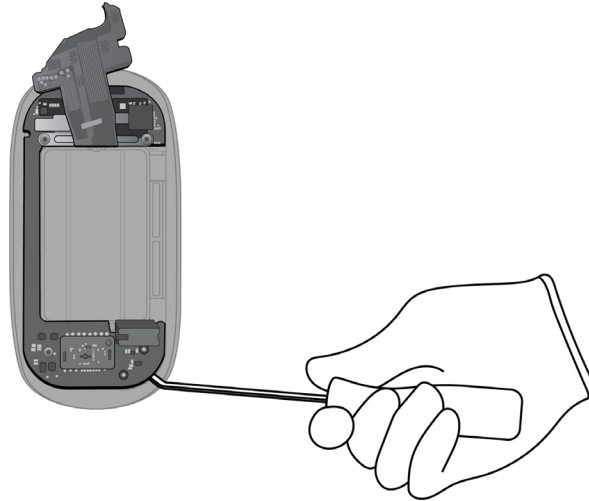


Lithium-ion polymer battery

BT

Battery

4. Pry off the main logic board.



Tools Used



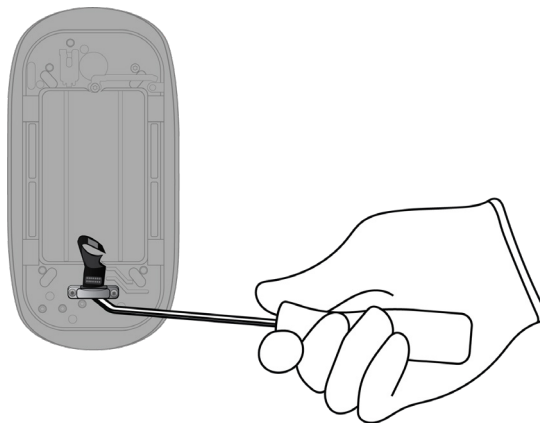
Fraction



Main logic board

PMs  
Precious Metals

5. Pry off the Lightning connector.



Tools Used



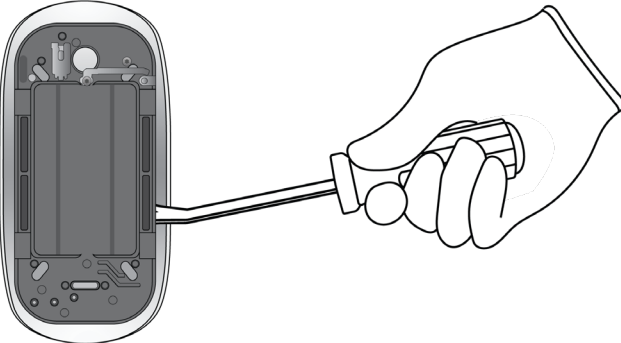
Fraction



Lightning connector

Cu  
Copper

6. Pry off the battery enclosure.



Tools Used



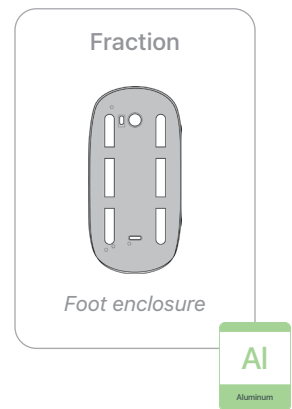
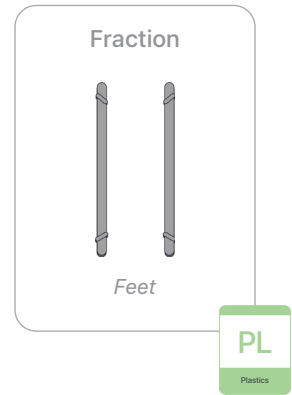
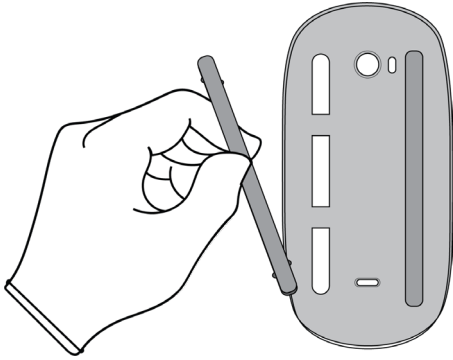
Fraction



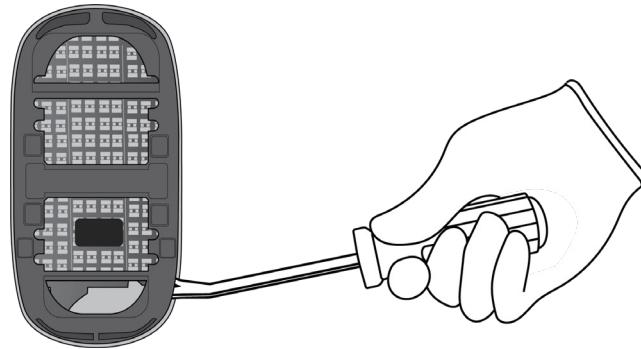
Battery enclosure

PL  
Plastics

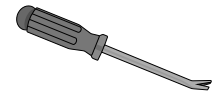
**7.** Pull the two feet off the foot enclosure.



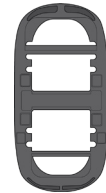
8. Pry the frame off the upper case.



Tools Used



Fraction

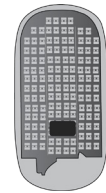


Frame

PL

Plastics

Fraction



Upper case

Cu



Copper

# Material Categorization of Output Fractions

All outputs from this process must be managed, handled, and disposed of in accordance with applicable waste laws and regulations, including but not limited to the Waste Framework Directive and its national enactments in Europe.

Fraction	Downstream Processing
<p data-bbox="435 554 570 579"><b>Aluminum</b></p>  <p data-bbox="428 831 576 852"><i>Foot enclosure</i></p>	<p data-bbox="964 554 1276 579"><b>Primary Target Material</b></p>  <p data-bbox="1084 625 1156 716">AI Aluminum</p>

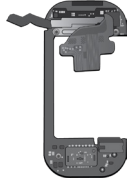
---

<p data-bbox="440 951 565 976"><b>Batteries</b></p>  <p data-bbox="367 1197 638 1218"><i>Lithium-ion polymer battery</i></p>	<p data-bbox="964 951 1276 976"><b>Primary Target Material</b></p>  <p data-bbox="1084 1024 1156 1115">BT Battery</p>
---	--

**Fraction**

**Downstream Processing**

**Logic Boards**



*Main logic board*

**Primary Target Material**



**Potential Additional Materials**



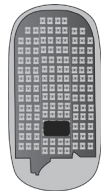
**Mixed Electronics**



*Charge cable*



*Lightning connector*



*Upper case*

**Primary Target Material**



**Potential Additional Materials**





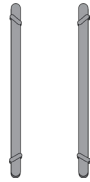
**Fraction**

**Downstream Processing**

**Mixed Plastics**



*Battery enclosure*



*Feet*



*Frame*

**Primary Target Material**

